



PRAIRIE VIEW MIDDLE SCHOOL



Wednesday
January 25th 2024

PRAIRIE
VIEW

ANNOUNCEMENTS

PRAIRIE VIEW VS. GRISSOM ANNUAL FOOD DRIVE CHALLENGE

It is time again for our annual Food Drive Challenge!

We encourage you to participate!

All students who donate food earn **1 raffle ticket per item**. If your food donations match the following *theme days*, you will be given **2 raffle tickets per item!** Those raffle tickets earn you the chance to win gift cards!

MONDAY - MACARONI MONDAY

Dry pasta, macaroni and cheese, ramen, and other noodle products.

TUESDAY - TACO TUESDAY

Beans, hard taco shells, taco sauce, taco seasoning, salsa, rice, etc.

WEDNESDAY - WACKY WEDNESDAY

Bring in more than three food items and get three extra tickets!

THURSDAY - SOUPABLE THURSDAY

Bring any kind of canned soup, or vegetable.

FRIDAY - FRUIT AND FUN FRIDAY

Snacks, sweets, breakfast items, canned fruit, fruit cups.



WHO: Prairie View will be competing with Grissom

WHAT: Bring in the most non-perishable food to benefit the *Tinley Park Food Pantry*

WHEN: Monday, January 22 - Friday, January 26

WHERE: Drop off your food donations to your first-hour teachers

WHY: To replenish the Tinley Park Food Pantry after the holidays

TODAY, THURSDAY, JANUARY 25TH

BOYS



PRAIRIE VIEW GYM
6/7th Grade Plays at 4 PM
8th Grade Follows

LET'S GO, EAGLES!

TODAY, THURSDAY, JANUARY 25TH



GRISSOM GYM
6/7th Grade Plays at 4 PM
8th Grade Follows

LET'S GO, EAGLES!



BREAKTHROUGH 2024

WHO?

ALL GRADE LEVEL STUDENTS FROM GRISSOM & PV

WHAT?

BREAKTHROUGH GIVES YOU AN OPPORTUNITY TO WORK AS A TEAM, FIND WAYS TO DEAL WITH THE PRESSURES OF MIDDLE SCHOOL, HANG WITH FRIENDS & HAVE FUN!

WHEN?

FRIDAY, FEBRUARY 9
PRAIRIE VIEW MIDDLE SCHOOL
5:00-9:00 PM

HOW MUCH?

THE COST IS \$30 AND THAT INCLUDES A T-SHIRT,
PRESENTER, FOOD & FUN!

QUESTIONS?

NO PROBLEM! ASK MRS. MALINOWSKI (PV) OR
MRS. RYAN (GRISSOM)

KRYANG
KSD140.ORG

PERMISSION SLIPS ARE DUE BY
FEBRUARY 1ST!

KMALINOWSKI@
KSD140.ORG

Supply Cart

if you need to purchase any school supplies the *NJHS supply cart* will be open each morning from **8:30-8:45.**



Mathletes

Attention all mathletes team members:

There will be a meeting **today**, *January 25th*, after school in *D-12* until *4:05*.

See you there!

Yearbook

Attention yearbook members, our meeting this week will be **today**, right after school. This is only for people who are editing pages.

We will see you today in room *B-5*!

Riddle

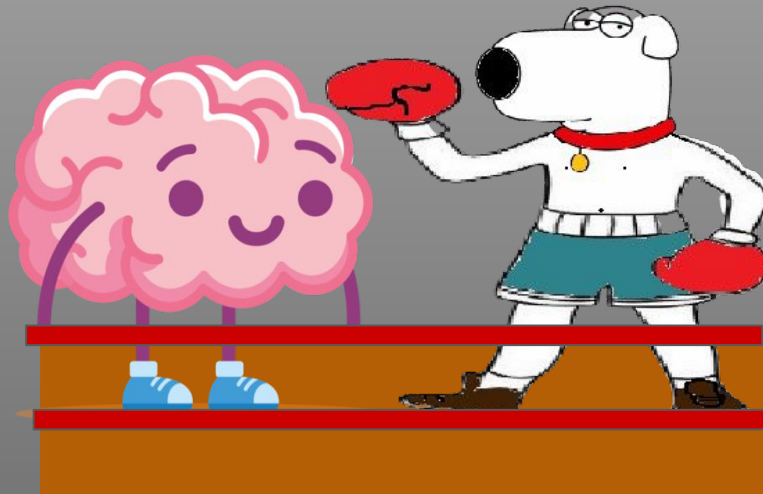
What belongs to you but others use it more?



Yesterday's Answer

Which ring is square?

The Boxing Ring



**And remember Prairie View,
believe in yourself and believe
in each other!**

Thanks Prairie View!

**Have a
Therapeutic Thursday!**